

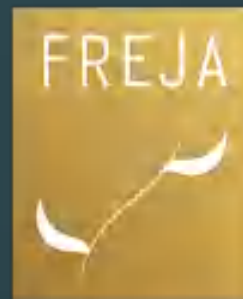


PHENOMENAL LOCATION

THE LAST LANDED HOUSE IN CENTRAL BSD CITY

LAST FREJA

TRULY URBAN HOUSE



TO LIVE, CONNECT & GROW



TRULY
URBAN
HOUSE

PHENOMENAL LOCATION

Perfectly positioned to balance proximity to buzzing urban areas with tranquil cluster calm making it a truly idyllic place to call home and live.

TO LIVE

FREJA



GOLDEN ACCESS

TO CONNECT

Not just close to what counts, but
connected to every facilities in BSD City.

TRULY
URBAN
HOUSE



Conveniently situated in the heart of vibrant inner BSD City, a growing property hot spot not just delivers profitability for the future, but also practical flexibility to grow a family .

PRIME INVESTMENT

TO GROW

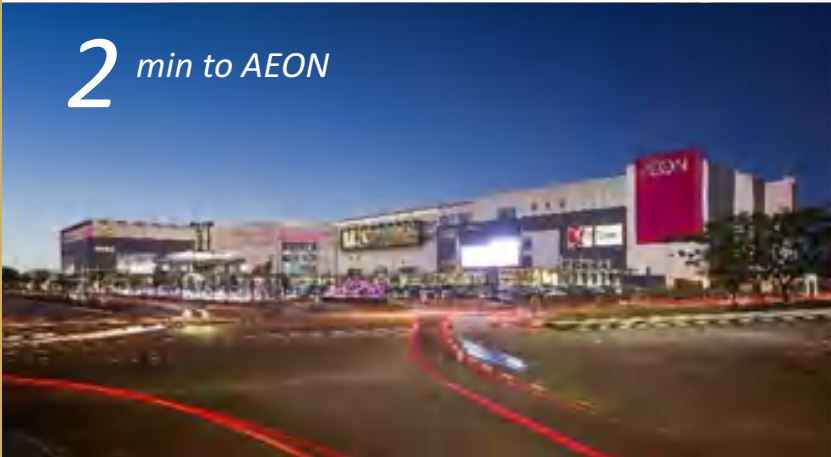
TRULY
URBAN
HOUSE

THE LAST LANDED HOUSE IN CENTRAL BSD CITY

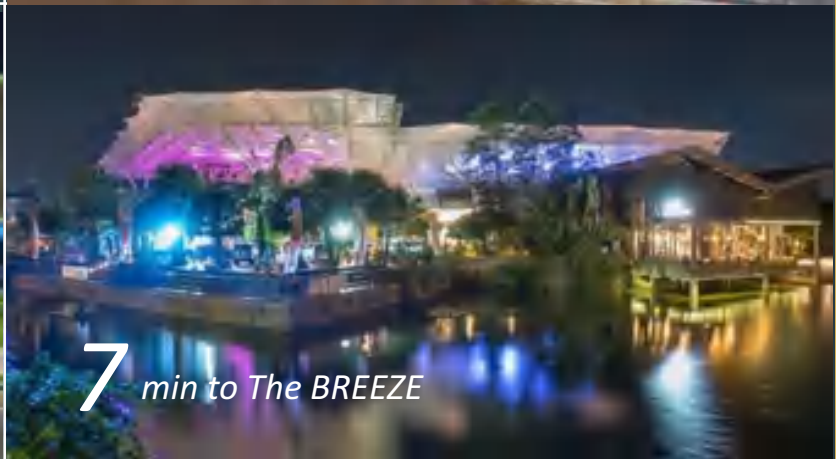


Disclaimer : Pictures shown in every page are for illustration purpose only. Actual product may vary due to product enhancement.

FUTURE DEVELOPMENT OF CENTRAL BSD



**MOST AMUSING
FACILITIES WITH
WALKING DISTANCE**





THE BREEZE

FUTURE DEVELOPMENT

THE ICON

FUTURE DEVELOPMENT

PASAR MODERN

INTERMODA INTERCHANGE



FREJA

AEON MALL

INTERMODA
ST. CISAUK, PS. MODERN

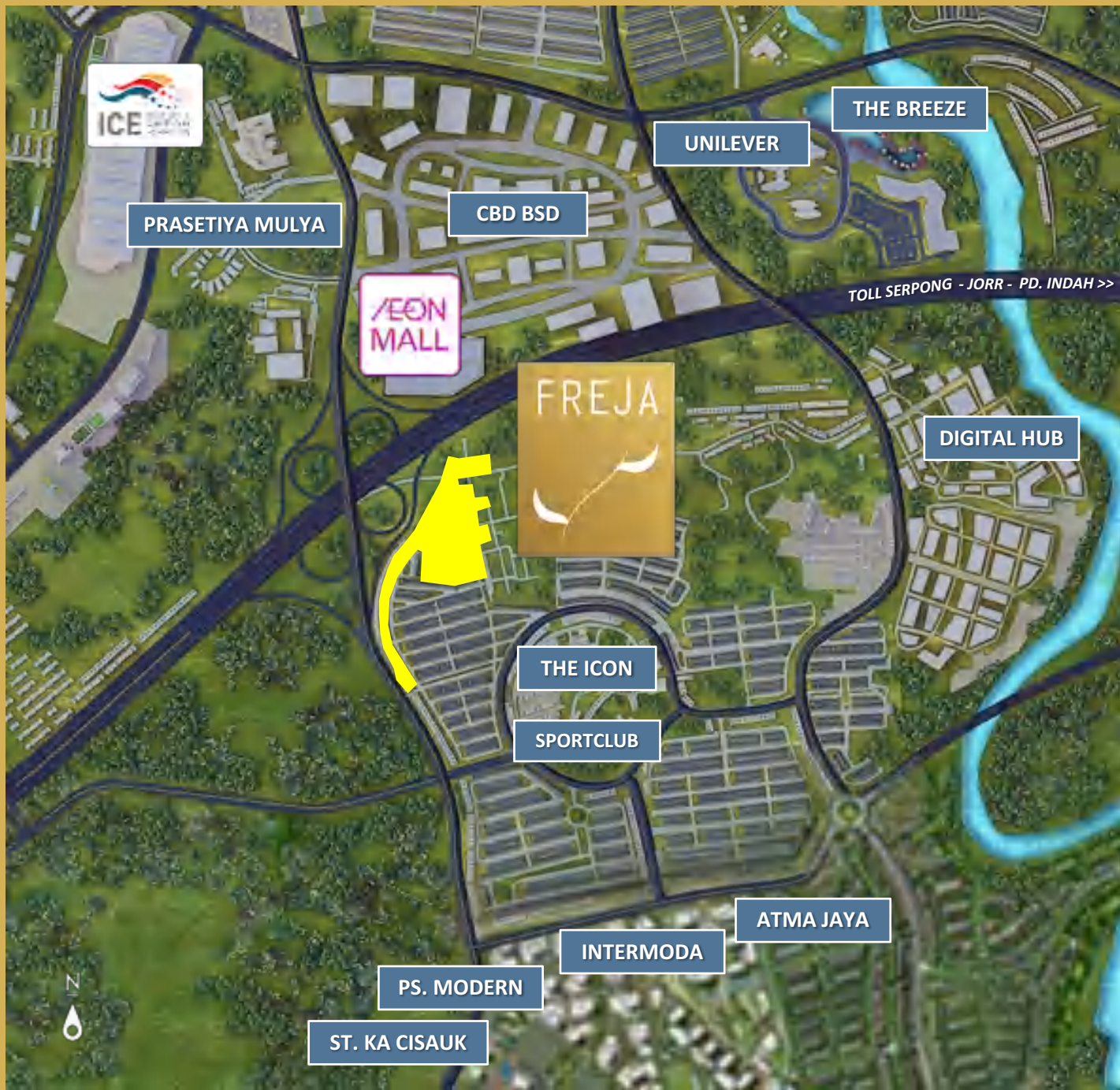
PRASETIYA MULYA

ICE



FREJA





SIMPLICITY

SHOW
UNIT ←



type **77/60** (5x12)

LIMITED **35** units
only



Disclaimer : Pictures shown in every page are for illustration purpose only. Actual product may vary due to product enhancement.



*The Truly Urban House for
Millennials in Central BSD*

The extraordinarily well crafted structure of Freja Suites, was designed to create a harmonious, tranquil living environment with spaces catering to a range of practical lifestyle considerations.



State-of-the-art
Layout



Building Area **77 m²**
Land Area **60 m²**
Land Size **5 x 12 m**

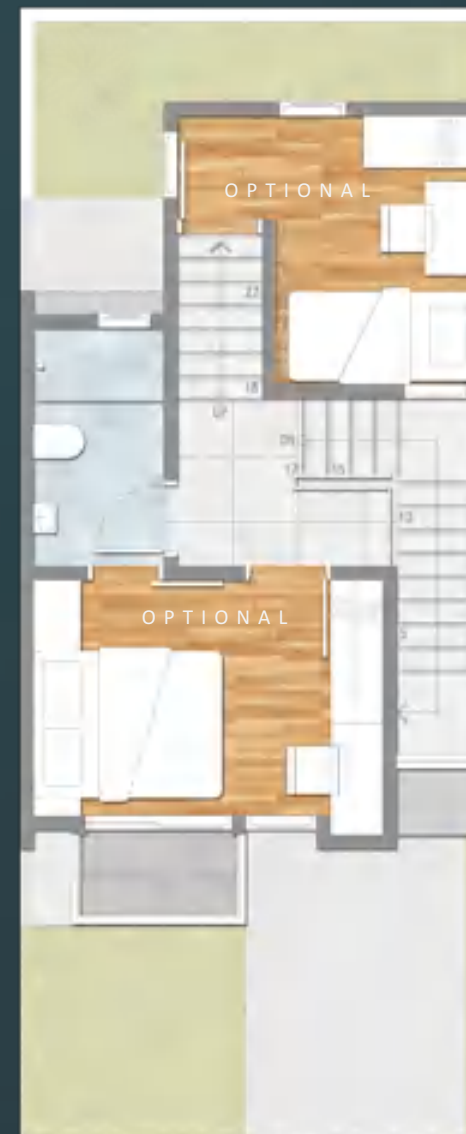
FULLY FURNISHED



FIRST FLOOR



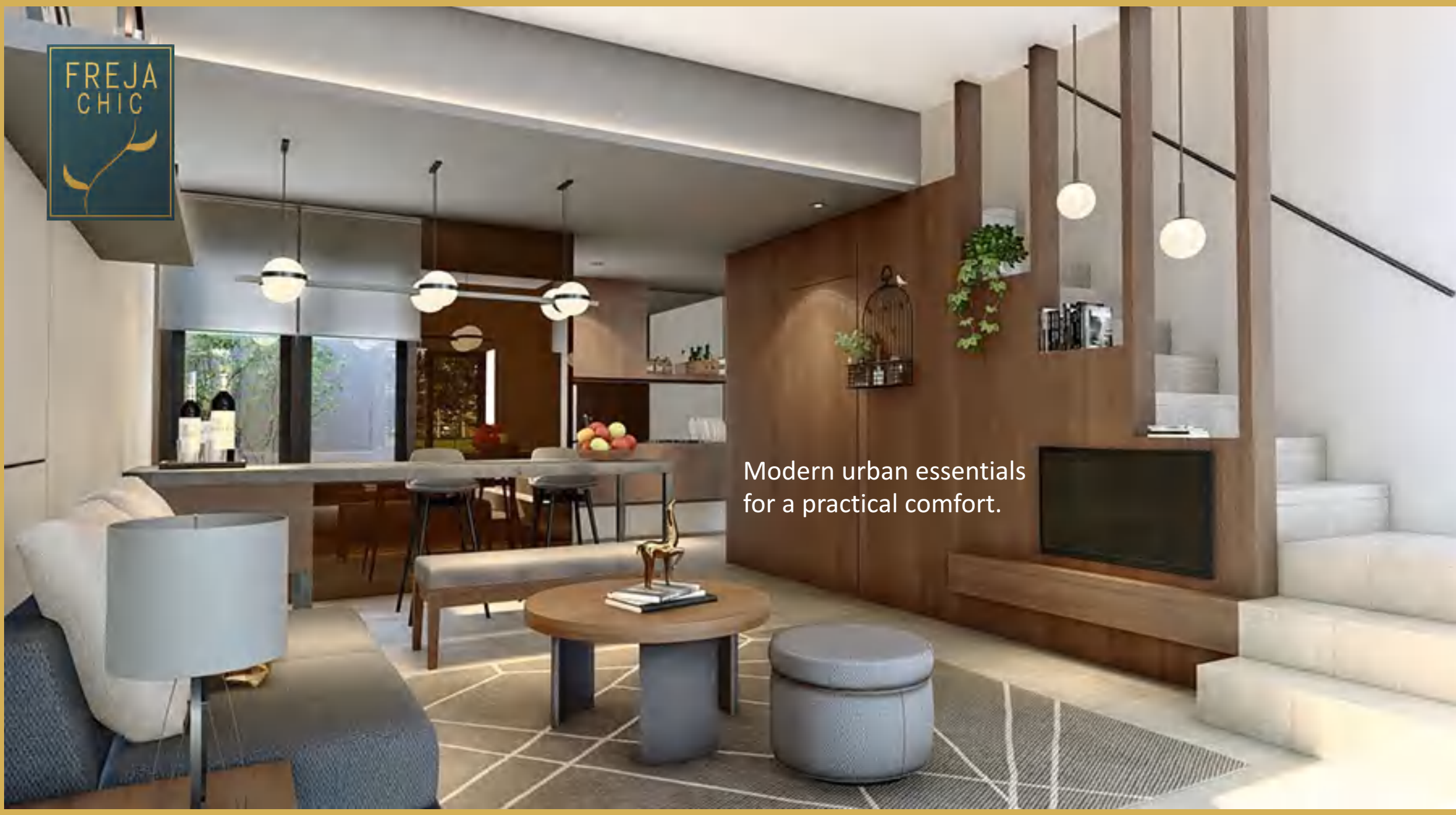
MEZANINE



SECOND FLOOR



Modern urban essentials
for a practical comfort.





Tailor made furniture is thoughtfully designed to be efficient, flexible and inviting.

FULLY
FURNISHED



Not just a place to live,
it's also a place to be.





Spacious Bedroom - allowing for the creation of beautiful personal spaces.





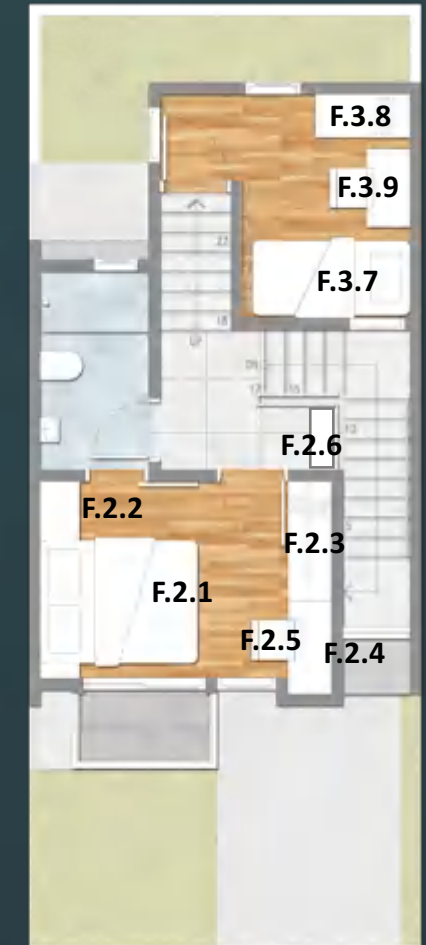
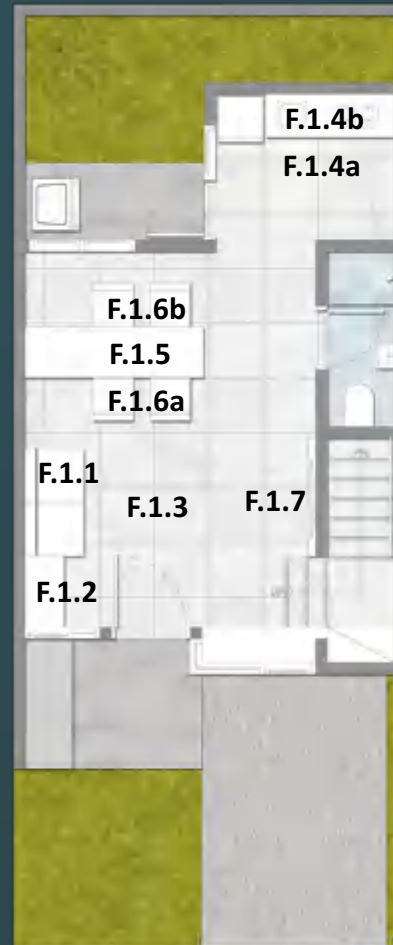
Creating beautiful moment





LIST FURNITURE

CODE	DESCRIPTION	UNIT
F.1.1	Sofa 2 Seater	1 bh
F.1.2	Meja Samping Sofa	1 bh
F.1.3	Meja Tamu	1 bh
F.1.4 a	Kabinet Pantry Bawah Inc.Kompom 2 Tungku + Zink	1 set
F.1.4 b	Kabinet Pantry Atas	1 set
F.1.5	Meja Makan	1 set
F.1.6 a	Kursi Makan Panjang	1 bh
F.1.6 b	Kursi Makan Pendek	2 bh
F.1.7	Ambalan Meja TV dan Backdrop TV	1 set
F.M.1	Matrass 80x200	1 set
F.M.2	Lemari Anak	1 bh
F.M.3	Meja dan Kursi	1 bh
F.2.1	Divan dan Matrass 160x200	1 set
F.2.2	Side Table	1 bh
F.2.3	Lemari 3 Pintu	1 set
F.2.4	Vanity Table dan Cermin	1 set
F.2.5	Puff	1 bh
F.2.6	Meja dan Kursi	1 set
F.3.7	Matrass 80x200	1 bh
F.3.8	Lemari Anak	1 bh
F.3.9	Meja dan Kursi	1 bh



EXCLUDE :

Elektronik (AC, Kulkas, TV, Mesin Cuci + Ambalan), Wallpaper, Hordyn, Vitrage, Roller Blind, Lukisan, Karpet, Aksesoris Ruang, Lampu Gantung, Lampu Dinding, Lampu Meja, Indirect Lighting, Shower Tray, Shower Curtain, Cermin KM.Mandi + Ambalan, Bed Cover, Sprei, Cushion, Bantal, Taman Atas Carport, Drop Ceiling Atas Ruang Makan.

* Lighting pada show unit bersifat non-standar, terdapat perbedaan dengan unit rumah standar.

* Aksesoris dan item dengan keterangan optional adalah item khusus untuk show unit.

S P E S I F I K A S I T E K N I S

	Pondasi	: Mini Pile
	Dinding	: Batu Bata/Bata Ringan, Plester Aci, Finishing Cat
	Atap	: Rangka Baja Ringan Penutup Atap Metal
	Plafond	
	Plafond Ruang Dalam	: Gypsum Board, Finishing Cat
	Plafond Oversteak	: GRC Board, Fisininh Cat
	Finishing Dinding	
	Luar	: Cat Weathercoat
	Dalam	: Plester Aci Finishing Cat
	Kamar Mandi	: Keramik
	Lantai	
	Ruang Utama	: Homogeneous Tile
	Kamar Tidur	: Homogeneous Tile
	Jendela	: Frame Aluminium Powder Coating, dengan kaca
	Pintu	
	Pintu Utama	: Solid Engineering Door
	Pintu Ruang Dalam + Toilet	: Engineering Wood Door
	Pintu ke Taman Belakang	: Kusen + Frame Aluminium Powder Coating
	Sanitair	: Standar Lokal
	Air	: Setara PDAM
	Listrik	: 3500 watt





WHY FREJA CHIC ?

- 1 PREMIUM LOCATION
- 2 HIGH VALUE INVESTMENT
- 3 ONE STEP SURROUNDING FACILITIES
- 4 3 BEDROOMS + 2 BATHROOMS + CARPORT
- 5 FULLY FURNISHED

TRULY
URBAN
HOUSE



TRULY
URBAN
HOUSE

Marketing & Sales Office

BSD Grand Boulevard, Green Office Park Kav 1 BSD City
Tangerang 15345 - Indonesia

021 5315 9000

Member of  **sinar mas land**
Building for a better future